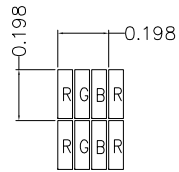
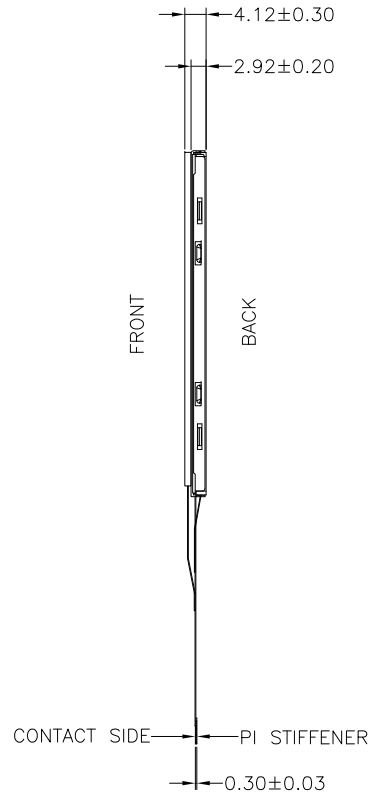
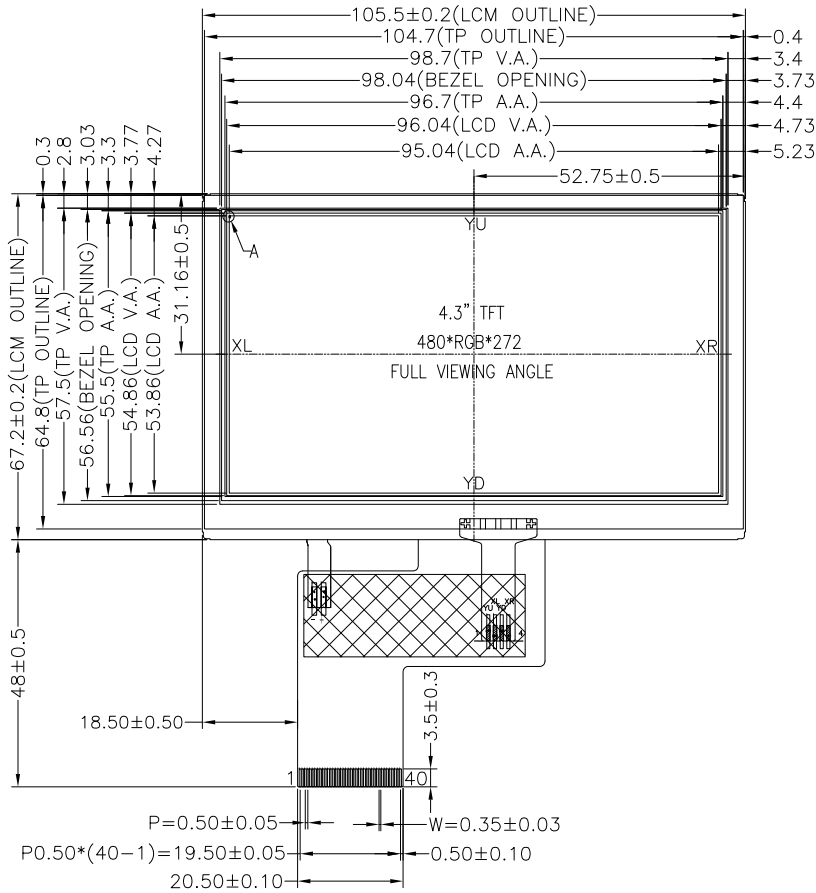
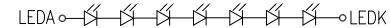
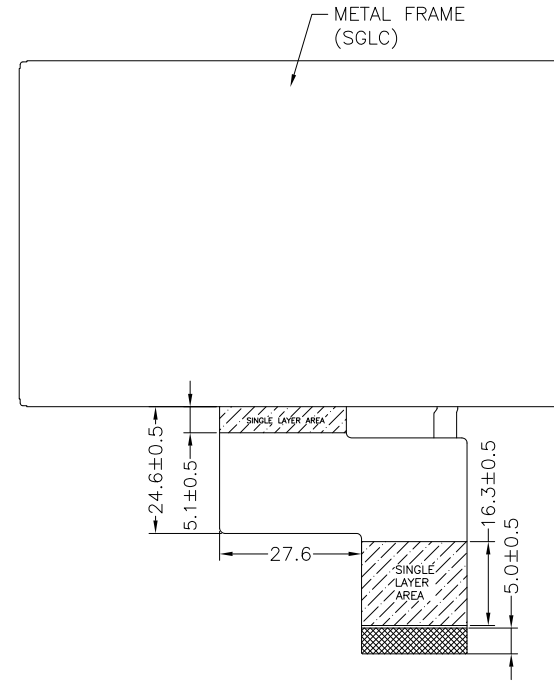


NO MECHANICAL HOUSING TO HOLD THE TFT AND THE TOUCH PANEL ON THIS PRODUCT, SO THE END UNIT'S MECHANICAL DESIGN MUST INCLUDE A HOUSING FOR PREVENTING THE SEPARATION OF THE TFT AND THE TOUCH PANEL.



DETAIL A  
(SCALE 50:1)



BACKLIGHT CIRCUIT DIAGRAM

PIN ASSIGNMENT

PIN	SYMBOL
1	LEDK
2	LEDA
3	GND
4	RESET
5	GND
6	CS
7	WRX
8	RDX
9	DCX
10	GND
11	D0
12	D1
13	D2
14	D3
15	D4
16	D5
17	D6
18	D7
19	D8
20	D9
21	D10
22	D11
23	D12
24	D13
25	D14
26	D15
27	GND
28	TE
29	VCI
30	IOVCC
31	NC
32	NC
33	NC
34	NC
35	NC
36	NC
37	YU
38	XL
39	YD
40	XR

NOTES:

- DISPLAY TYPE: TFT, TRANSMISSIVE, NORMALLY BLACK
- OPERATING VOLTAGE: VCI=3.3V (TYP.)
- VIEWING DIRECTION: FULL VIEWING ANGLE
- DRIVER IC: NV3041
- OPERATING TEMP.: -20°C ~ 70°C
- STORAGE TEMP.: -30°C ~ 80°C
- LED BACKLIGHT: WHITE LED, IF=20mA, VF=19.6V~23.8V
- SURFACE LUMINANCE: 200CD/M<sup>2</sup> (TYP.)(WITH RTP)
- TOP POLARIZER SURFACE TREATMENT: ANTI-GLARE
- ONLY THE SINGLE LAYER AREA ON FPC IS BENDABLE AND THE MINIMUM BEND RADIUS IS 1.5MM
- GENERAL TOLERANCE: ±0.3MM
- ROHS COMPLIANT

MULTI-INNO TECHNOLOGY CO., LTD.			
DRAWN BY:	RITA 2023.07.04		MODULE P/N:
CHECKED BY:		SCALE : 1/1	MI0430ALT-1RP
APPROVED BY:		UNIT: mm	DESCRIPTION:
VER.	01	SHEET NO.: 1/1	TFT + RTP MODULE

01	FIRST ISSUE	RITA	2023.07.04
VER.	REVISED DESCRIPTION	REVISER	DATE